

**UNITED STATES BANKRUPTCY COURT
DISTRICT OF UTAH**

**2022
STATISTICS**

Chapter	January	February	March	April	May	June
7	183	184	320	265	301	290
13	155	138	197	149	178	164
11	1	1	3	0	3	1
12	0	0	0	0	0	0
15	0	0	0	0	0	0
2022	339	323	520	414	482	455
2021	376	365	592	603	533	487

Chapter	July	August	September	October	November	December
7	274	296	246	247		
13	161	216	174	198		
11	0	5	2	2		
12	0	1	0	0		
15	0	0	0	0		
2022	435	518	422	447		
2021	492	429	417	461	416	407

Filings through October 31, 2022 decreased by 8% compared with filings through October 31, 2021.

TOTAL FILINGS BY CHAPTER
OCTOBER 2017-2022

Chapter	2017	2018	2019	2020	2021	2022
7	505	521	513	389	282	247
13	411	388	385	183	179	198
11	3	8	1	3	0	2
12	0	0	0	0	0	0
15	0	0	0	0	0	0
Total	919	917	899	575	461	447

**TOTAL ANNUAL FILINGS BY CHAPTER THROUGH
2017-2022**

CHAPTER	2017	2018	2019	2020	2021	2022 (YTD)
7	6665	5786	5805	5093	3699	2606
13	4569	3953	3860	2526	1868	1730
11	22	28	23	20	8	18
12	0	6	0	2	0	1
15	2	0	0	0	3	0
Total	11,258	9,773	9,688	7,641	5,578	4,355

**COMPARISON OF THE PERCENTAGE OF FILINGS BY CHAPTER FOR THE
LAST SIX YEARS**

CHAPTER	2017	2018	2019	2020	2021	2022 (YTD)
7	59%	60%	60%	67%	67%	60%
13	41%	40%	40%	33%	33%	40%
11						
12	<1%	<1%	<1%	<1%	<1%	<1%
15						
Total		100%	100%	100%	100%	100%

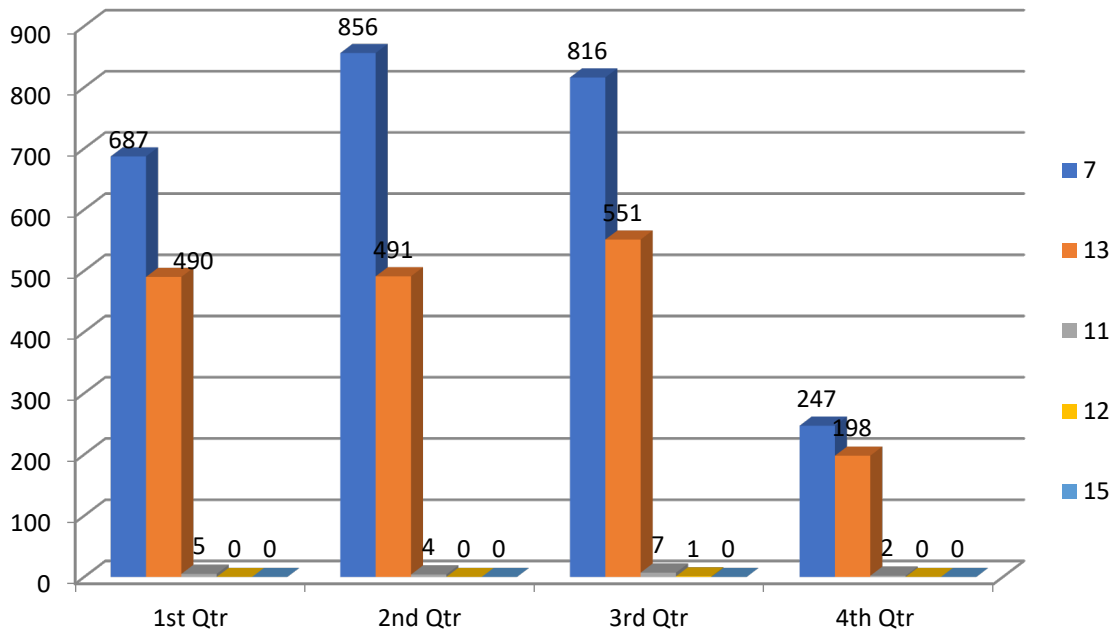
2022 ADVERSARY STATISTICS

	January	February	March	April	May	June	July
2022	9	3	15	9	7	8	19
2021	12	7	15	14	15	5	5

	August	September	October	November	December	TOTAL
2022	7	13	6			96
2021	7	10	12	11	15	128

**Adversary filings through October 31, 2022 decreased by 6% compared
October 31, 2021.**

Filings by Chapter



Caseload Percentage by Chapter

