

**UNITED STATES BANKRUPTCY COURT  
DISTRICT OF UTAH**

**2026  
STATISTICS**

Chapter	January	February	March	April	May	June
7	344	275	556	513	540	
13	194	204	226	209	223	
11	2	4	2	6	1	
12	0	0	0	2	0	
15	0	0	0	0	0	
<b>2026</b>	<b>540</b>	<b>483</b>	<b>784</b>	<b>730</b>	<b>764</b>	
<b>2025</b>	<b>532</b>	<b>450</b>	<b>758</b>	<b>697</b>	<b>695</b>	<b>642</b>

Chapter	July	August	September	October	November	December
7						
13						
11						
12						
15						
<b>2026</b>						
<b>2025</b>	<b>693</b>	<b>705</b>	<b>744</b>	<b>761</b>	<b>623</b>	<b>613</b>

Filings through May 31, 2026, increased by 5% compared with filings through May 31, 2025.

**TOTAL FILINGS BY CHAPTER**  
**MAY 2021-2026**

Chapter	2021	2022	2023	2024	2025	2026
7	390	301	375	387	454	540
13	142	178	205	226	237	223
11	1	3	7	2	4	1
12	0	0	0	0	0	0
15	0	0	0	0	0	0
<b>Total</b>	<b>533</b>	<b>482</b>	<b>587</b>	<b>615</b>	<b>695</b>	<b>764</b>

**TOTAL ANNUAL FILINGS BY CHAPTER THROUGH  
2021-2026**

<b>CHAPTER</b>	<b>2021</b>	<b>2022</b>	<b>2023</b>	<b>2024</b>	<b>2025</b>	<b>2026 (YTD)</b>
<b>7</b>	<b>3699</b>	<b>3055</b>	<b>3616</b>	<b>4306</b>	<b>5160</b>	<b>2228</b>
<b>13</b>	<b>1868</b>	<b>2053</b>	<b>2373</b>	<b>2467</b>	<b>2721</b>	<b>1056</b>
<b>11</b>	<b>8</b>	<b>20</b>	<b>35</b>	<b>29</b>	<b>32</b>	<b>15</b>
<b>12</b>	<b>0</b>	<b>1</b>	<b>0</b>	<b>0</b>	<b>0</b>	<b>2</b>
<b>15</b>	<b>3</b>	<b>0</b>	<b>0</b>	<b>0</b>	<b>0</b>	<b>0</b>
<b>Total</b>	<b>5,578</b>	<b>5,129</b>	<b>6,024</b>	<b>6,802</b>	<b>7,913</b>	<b>3,301</b>

**COMPARISON OF THE PERCENTAGE OF FILINGS BY CHAPTER FOR THE  
LAST SIX YEARS**

<b>CHAPTER</b>	<b>2021</b>	<b>2022</b>	<b>2023</b>	<b>2024</b>	<b>2025</b>	<b>2026 (YTD)</b>
<b>7</b>	<b>67%</b>	<b>60%</b>	<b>60%</b>	<b>63%</b>	<b>65%</b>	<b>68%</b>
<b>13</b>	<b>33%</b>	<b>40%</b>	<b>39%</b>	<b>37%</b>	<b>35%</b>	<b>32%</b>
<b>11</b>						
<b>12</b>	<b>&lt;1%</b>	<b>&lt;1%</b>	<b>1%</b>	<b>&lt;1%</b>	<b>&lt;1%</b>	<b>&lt;1%</b>
<b>15</b>						
<b>Total</b>	<b>100%</b>	<b>100%</b>	<b>100%</b>	<b>100%</b>	<b>100%</b>	<b>100%</b>

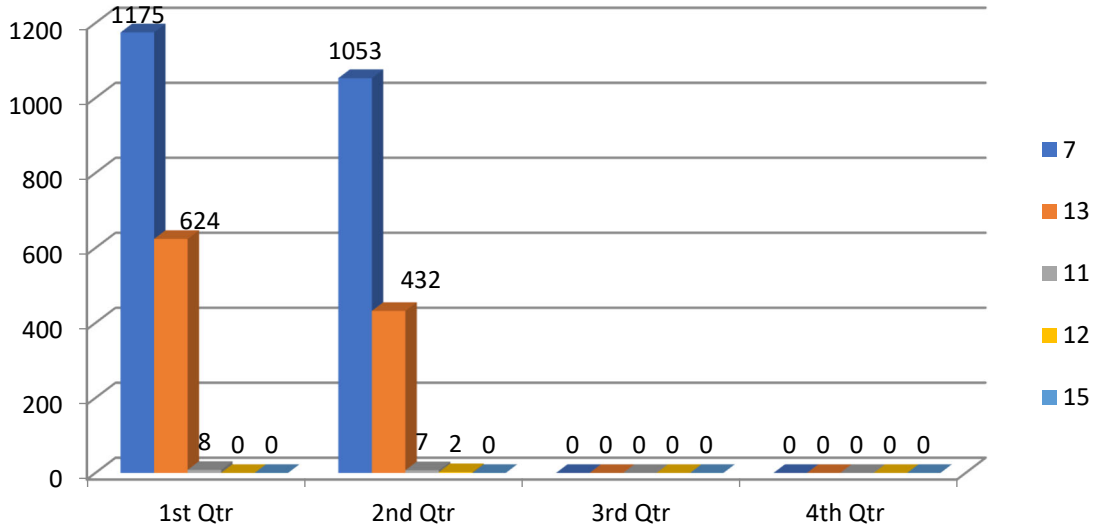
**2026 ADVERSARY STATISTICS**

	<b>January</b>	<b>February</b>	<b>March</b>	<b>April</b>	<b>May</b>	<b>June</b>	<b>July</b>
<b>2026</b>	<b>15</b>	<b>14</b>	<b>22</b>	<b>23</b>	<b>27</b>		
<b>2025</b>	<b>10</b>	<b>10</b>	<b>13</b>	<b>8</b>	<b>6</b>	<b>40</b>	<b>26</b>

	<b>August</b>	<b>September</b>	<b>October</b>	<b>November</b>	<b>December</b>	<b>TOTAL</b>
<b>2026</b>						<b>101</b>
<b>2025</b>	<b>10</b>	<b>10</b>	<b>21</b>	<b>11</b>	<b>30</b>	<b>195</b>

**Adversary filings through May 31, 2026, increased by 115% compared with filings through May 31, 2025.**

## Filings by Chapter as of May 31, 2026



## Caseload Percentage by Chapter

