

**UNITED STATES BANKRUPTCY COURT  
DISTRICT OF UTAH**

**2024  
STATISTICS**

Chapter	January	February	March	April	May	June
7	242					
13	177					
11	1					
12	0					
15	0					
<b>2024</b>	<b>420</b>					
<b>2023</b>	<b>344</b>	<b>360</b>	<b>543</b>	<b>467</b>	<b>587</b>	<b>529</b>

Chapter	July	August	September	October	November	December
7						
13						
11						
12						
15						
<b>2024</b>						
<b>2023</b>	<b>428</b>	<b>633</b>	<b>550</b>	<b>587</b>	<b>549</b>	<b>447</b>

Filings through January 31, 2024, increased by 22% compared with filings through January 31, 2023.

**TOTAL FILINGS BY CHAPTER**  
**JANUARY 2019-2024**

Chapter	2019	2020	2021	2022	2023	2024
7	288	338	227	183	184	242
13	310	315	149	155	160	177
11	1	1	0	1	0	1
12	0	0	0	0	0	0
15	0	0	0	0	0	0
<b>Total</b>	<b>599</b>	<b>654</b>	<b>376</b>	<b>339</b>	<b>344</b>	<b>420</b>

**TOTAL ANNUAL FILINGS BY CHAPTER THROUGH  
2019-2024**

<b>CHAPTER</b>	<b>2019</b>	<b>2020</b>	<b>2021</b>	<b>2022</b>	<b>2023</b>	<b>2024 (YTD)</b>
<b>7</b>	<b>5805</b>	<b>5093</b>	<b>3699</b>	<b>3055</b>	<b>3616</b>	<b>242</b>
<b>13</b>	<b>3860</b>	<b>2526</b>	<b>1868</b>	<b>2053</b>	<b>2373</b>	<b>177</b>
<b>11</b>	<b>23</b>	<b>20</b>	<b>8</b>	<b>20</b>	<b>35</b>	<b>1</b>
<b>12</b>	<b>0</b>	<b>2</b>	<b>0</b>	<b>1</b>	<b>0</b>	<b>0</b>
<b>15</b>	<b>0</b>	<b>0</b>	<b>3</b>	<b>0</b>	<b>0</b>	<b>0</b>
<b>Total</b>	<b>9,688</b>	<b>7,641</b>	<b>5,578</b>	<b>5,129</b>	<b>6,024</b>	<b>420</b>

**COMPARISON OF THE PERCENTAGE OF FILINGS BY CHAPTER FOR THE  
LAST SIX YEARS**

<b>CHAPTER</b>	<b>2019</b>	<b>2020</b>	<b>2021</b>	<b>2022</b>	<b>2023</b>	<b>2024 (YTD)</b>
<b>7</b>	<b>60%</b>	<b>67%</b>	<b>67%</b>	<b>60%</b>	<b>60%</b>	<b>58%</b>
<b>13</b>	<b>40%</b>	<b>33%</b>	<b>33%</b>	<b>40%</b>	<b>39%</b>	<b>42%</b>
<b>11</b>						
<b>12</b>	<b>&lt;1%</b>	<b>&lt;1%</b>	<b>&lt;1%</b>	<b>&lt;1%</b>	<b>1%</b>	<b>&lt;1%</b>
<b>15</b>						
<b>Total</b>	<b>100%</b>	<b>100%</b>	<b>100%</b>	<b>100%</b>	<b>100%</b>	<b>100%</b>

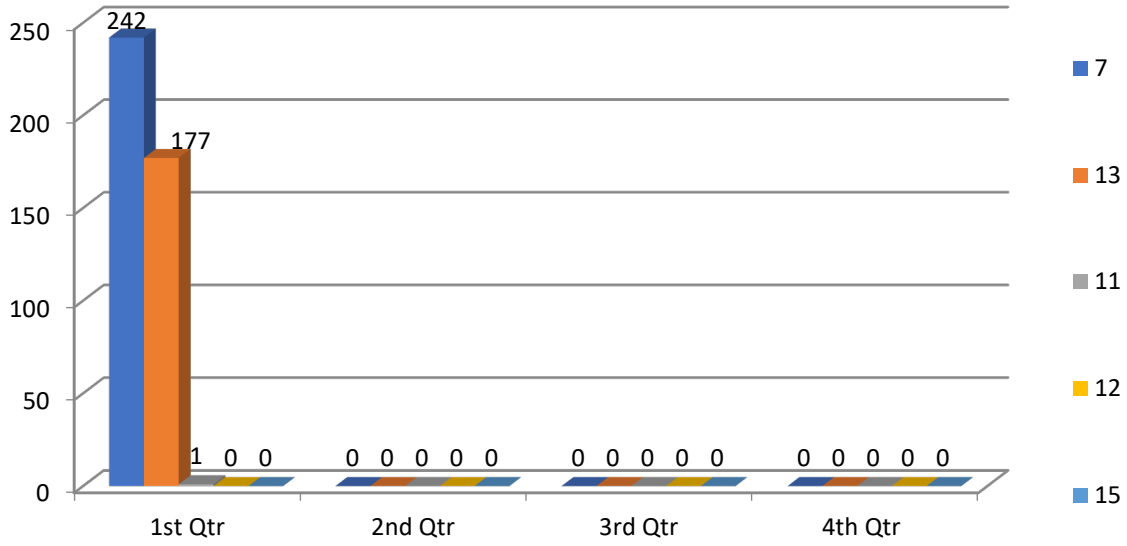
**2024 ADVERSARY STATISTICS**

	<b>January</b>	<b>February</b>	<b>March</b>	<b>April</b>	<b>May</b>	<b>June</b>	<b>July</b>
<b>2024</b>	<b>15</b>						
<b>2023</b>	<b>4</b>	<b>4</b>	<b>9</b>	<b>8</b>	<b>12</b>	<b>13</b>	<b>11</b>

	<b>August</b>	<b>September</b>	<b>October</b>	<b>November</b>	<b>December</b>	<b>TOTAL</b>
<b>2024</b>						<b>15</b>
<b>2023</b>	<b>25</b>	<b>11</b>	<b>6</b>	<b>5</b>	<b>7</b>	<b>115</b>

**Adversary filings through January 31, 2024, increased by 275% compared.  
January 31, 2023.**

## Filings by Chapter as of January 31, 2023



## Caseload Percentage by Chapter

