

**UNITED STATES BANKRUPTCY COURT
DISTRICT OF UTAH**

**2023
STATISTICS**

Chapter	January	February	March	April	May	June
7	184	192	341	289	375	327
13	160	167	195	178	205	198
11	0	1	7	0	7	4
12	0	0	0	0	0	0
15	0	0	0	0	0	0
2023	344	360	543	467	587	529
2022	339	323	520	414	482	455

Chapter	July	August	September	October	November	December
7	265	360	338	359	316	270
13	161	270	207	225	231	176
11	2	3	5	3	2	1
12	0	0	0	0	0	0
15	0	0	0	0	0	0
2023	428	633	550	587	549	447
2022	435	518	422	447	443	331

Filings through December 31, 2023, increased by 17% compared with filings through December 31, 2022.

TOTAL FILINGS BY CHAPTER
DECEMBER 2018-2023

Chapter	2018	2019	2020	2021	2022	2023
7	351	412	336	244	194	270
13	265	259	172	163	136	176
11	1	1	1	0	1	1
12	1	0	0	0	0	0
15	0	0	0	0	0	0
Total	618	672	509	407	331	447

TOTAL ANNUAL FILINGS BY CHAPTER THROUGH
2018-2023

CHAPTER	2018	2019	2020	2021	2022	2023 (YTD)
7	5786	5805	5093	3699	3055	3616
13	3953	3860	2526	1868	2053	2373
11	28	23	20	8	20	35
12	6	0	2	0	1	0
15	0	0	0	3	0	0
Total	9,773	9,688	7,641	5,578	5,129	6,024

COMPARISON OF THE PERCENTAGE OF FILINGS BY CHAPTER FOR THE
LAST SIX YEARS

CHAPTER	2018	2019	2020	2021	2022	2023 (YTD)
7	60%	60%	67%	67%	60%	60%
13	40%	40%	33%	33%	40%	39%
11						
12	<1%	<1%	<1%	<1%	<1%	1%
15						
Total	100%	100%	100%	100%	100%	100%

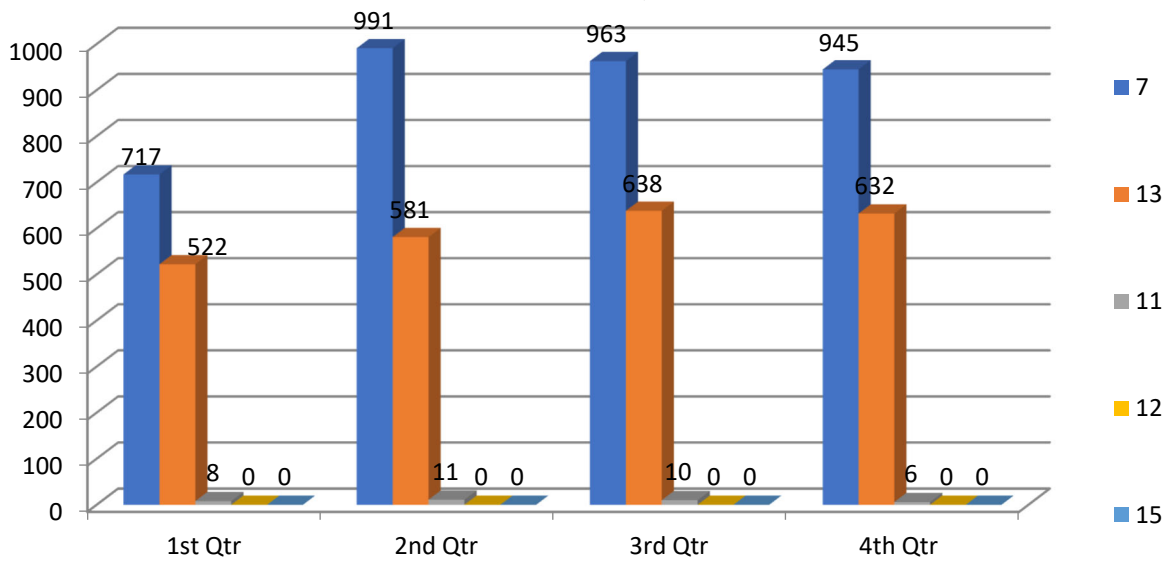
2023 ADVERSARY STATISTICS

	January	February	March	April	May	June	July
2023	4	4	9	8	12	13	11
2022	9	3	15	9	7	8	19

	August	September	October	November	December	TOTAL
2023	25	11	6	5	7	115
2022	7	13	6	5	4	105

Adversary filings through December 31, 2023, increased by 10% compared.
December 31, 2022.

Filings by Chapter as of December 31, 2023



Caseload Percentage by Chapter

