

**UNITED STATES BANKRUPTCY COURT  
DISTRICT OF UTAH**

**2022  
STATISTICS**

Chapter	January	February	March	April	May	June
7	183	184	320	265	301	290
13	155	138	197	149	178	164
11	1	1	3	0	3	1
12	0	0	0	0	0	0
15	0	0	0	0	0	0
<b>2022</b>	<b>339</b>	<b>323</b>	<b>520</b>	<b>414</b>	<b>482</b>	<b>455</b>
<b>2021</b>	<b>376</b>	<b>365</b>	<b>592</b>	<b>603</b>	<b>533</b>	<b>487</b>

Chapter	July	August	September	October	November	December
7	274	296				
13	161	216				
11	0	5				
12	0	1				
15	0	0				
<b>2022</b>	<b>435</b>	<b>518</b>				
<b>2021</b>	<b>492</b>	<b>429</b>	<b>417</b>	<b>461</b>	<b>416</b>	<b>407</b>

Filings through August 31, 2022 decreased by 10% compared with filings through August 31, 2021.

**TOTAL FILINGS BY CHAPTER  
AUGUST 2017-2022**

Chapter	2017	2018	2019	2020	2021	2022
7	624	535	499	410	297	296
13	424	408	351	217	132	216
11	0	0	3	1	0	5
12	0	2	0	0	0	1
15	0	0	0	0	0	0
<b>Total</b>	<b>1050</b>	<b>945</b>	<b>853</b>	<b>628</b>	<b>429</b>	<b>518</b>

**TOTAL ANNUAL FILINGS BY CHAPTER THROUGH  
2017-2022**

<b>CHAPTER</b>	<b>2017</b>	<b>2018</b>	<b>2019</b>	<b>2020</b>	<b>2021</b>	<b>2022 (YTD)</b>
<b>7</b>	<b>6665</b>	<b>5786</b>	<b>5805</b>	<b>5093</b>	<b>3699</b>	<b>2113</b>
<b>13</b>	<b>4569</b>	<b>3953</b>	<b>3860</b>	<b>2526</b>	<b>1868</b>	<b>1358</b>
<b>11</b>	<b>22</b>	<b>28</b>	<b>23</b>	<b>20</b>	<b>8</b>	<b>14</b>
<b>12</b>	<b>0</b>	<b>6</b>	<b>0</b>	<b>2</b>	<b>0</b>	<b>1</b>
<b>15</b>	<b>2</b>	<b>0</b>	<b>0</b>	<b>0</b>	<b>3</b>	<b>0</b>
<b>Total</b>	<b>11,258</b>	<b>9,773</b>	<b>9,688</b>	<b>7,641</b>	<b>5,578</b>	<b>3,486</b>

**COMPARISON OF THE PERCENTAGE OF FILINGS BY CHAPTER FOR THE  
LAST SIX YEARS**

<b>CHAPTER</b>	<b>2017</b>	<b>2018</b>	<b>2019</b>	<b>2020</b>	<b>2021</b>	<b>2022 (YTD)</b>
<b>7</b>	<b>59%</b>	<b>60%</b>	<b>60%</b>	<b>67%</b>	<b>67%</b>	<b>61%</b>
<b>13</b>	<b>41%</b>	<b>40%</b>	<b>40%</b>	<b>33%</b>	<b>33%</b>	<b>39%</b>
<b>11</b>						
<b>12</b>	<b>&lt;1%</b>	<b>&lt;1%</b>	<b>&lt;1%</b>	<b>&lt;1%</b>	<b>&lt;1%</b>	<b>&lt;1%</b>
<b>15</b>						
<b>Total</b>		<b>100%</b>	<b>100%</b>	<b>100%</b>	<b>100%</b>	<b>100%</b>

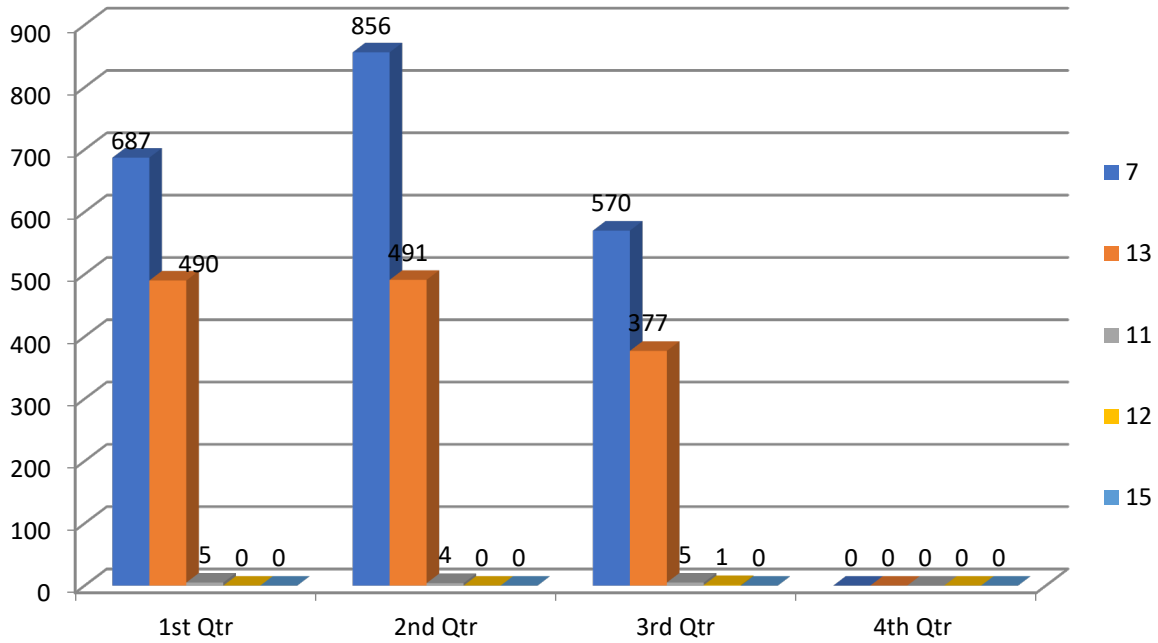
**2022 ADVERSARY STATISTICS**

	<b>January</b>	<b>February</b>	<b>March</b>	<b>April</b>	<b>May</b>	<b>June</b>	<b>July</b>
<b>2022</b>	<b>9</b>	<b>3</b>	<b>15</b>	<b>9</b>	<b>7</b>	<b>8</b>	<b>19</b>
<b>2021</b>	<b>12</b>	<b>7</b>	<b>15</b>	<b>14</b>	<b>15</b>	<b>5</b>	<b>5</b>

	<b>August</b>	<b>September</b>	<b>October</b>	<b>November</b>	<b>December</b>	<b>TOTAL</b>
<b>2022</b>	<b>7</b>					<b>77</b>
<b>2021</b>	<b>7</b>	<b>10</b>	<b>12</b>	<b>11</b>	<b>15</b>	<b>128</b>

**Adversary filings through August 31, 2022 decreased by 4% compared August 31, 2021.**

## Filings by Chapter



## Caseload Percentage by Chapter

